

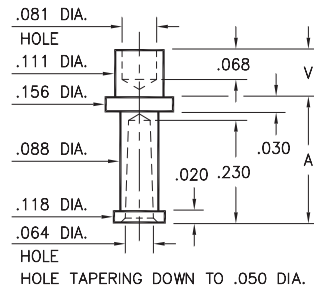
MALE PCB PINS

SOLDER TERMINALS VARIOUS TYPES

2709

2709-X-07-XX-00-00-07-0

Swage mount in .116 hole

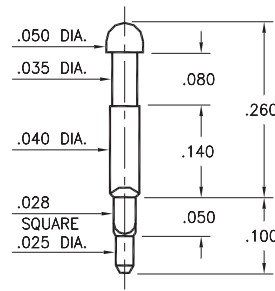


Basic Part Number	Board Thickness	Length V	Length A
2709-2	.062	.109	.281
2709-3	.094	.141	.250

8602

8602-1-00-XX-00-00-07-0

Square press-fit in .032 plated through-hole

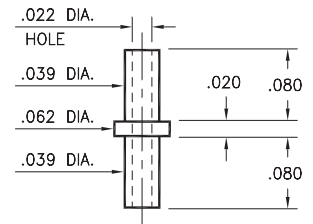


2115

2115-2-00-XX-00-00-07-0

Swage mount in .043 hole

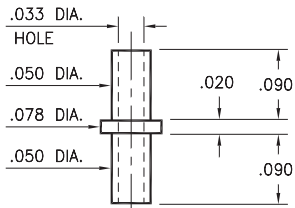
For a .062 thick board



2326

2326-2-00-XX-00-00-07-0

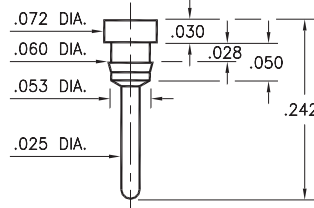
Swage mount in .055 hole
For a .062 thick board



8831

8831-0-00-XX-00-00-03-0

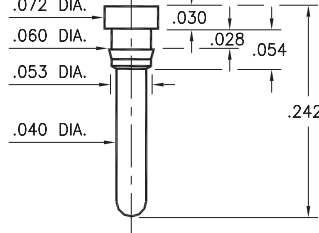
Press-fit in .057 mounting hole



8835

8835-0-00-XX-00-00-03-0

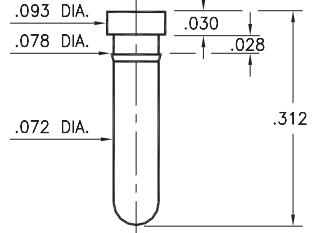
Press-fit in .057 mounting hole



8836

8836-0-00-XX-00-00-03-0

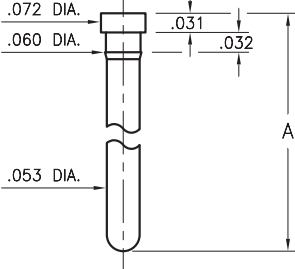
Press-fit in .075 mounting hole



0912/7912

0912-0-00-XX-00-00-03-0

Press-fit in .057 mounting hole



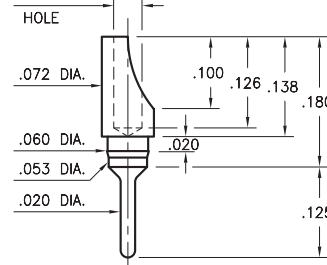
Basic Part Number	Pin Length A
0912-0	.313
7912-0	.510

3080

3080-0-01-XX-00-00-03-0

Press-fit in .057 mounting hole

For wire sizes up to 22 AWG



SPECIFICATIONS:

Pin Material: Brass Alloy 360, 1/2 Hard
(Swage pins are annealed)

Dimensions: Inches

Tolerances On: Lengths: $\pm .005$
Diameters: $\pm .002$
Angles: $\pm 2^\circ$



ORDER CODE: **XXXX - X - XX - XX - 00 - 00 - XX - 0**

BASIC PART #

SPECIFY PIN FINISH:

- 01 200 μ " TIN/LEAD OVER NICKEL
- ◆ 80 200 μ " TIN OVER NICKEL (RoHS)
- ◆ 44 300 μ " SILVER OVER COPPER (RoHS)
- 50 300 μ " ELECTRO-SOLDER (60/40 SnPb)

