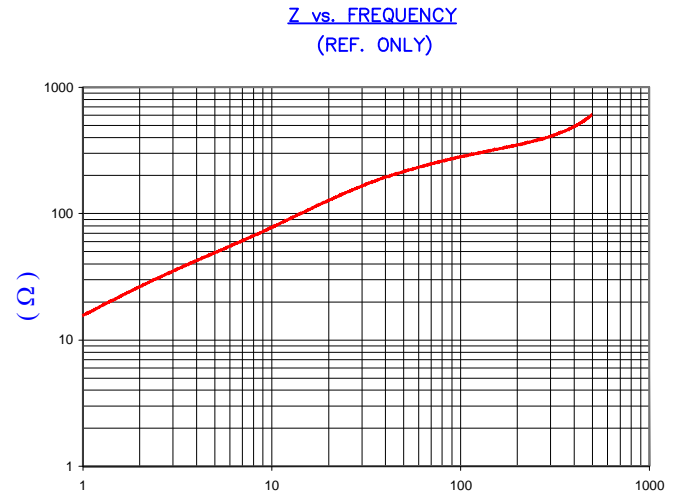


CHAMFER  
DETAIL A  
SCALE: 4:1

SECTION A-A  
SEE DETAIL "A"

**UNCONTROLLED  
DOCUMENT**

IMPEDANCE ( Z )			
Frequency	25 MHz	100 MHz	300 MHz
Nominal (REF)	150 Ω	280 Ω	400 Ω
Minimum	- Ω	224 Ω	- Ω



FREQUENCY (MHz)  
AGILENT E4991A Impedance/Material Analyzer  
HP 16092A Test Fixture REF #3188

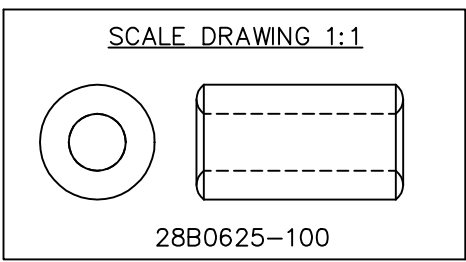
FERRITE CORE DIMENSIONS (SPEC): mm/inches

A	15.88 [.625]	+	0.30 [.012]
B	7.87 [.310]	+	0.15 [.006]
C	28.58 [1.125]	+	0.76 [.030]

WEIGHT/1000 20.66 kgs [45.55 Lbs]

NOTES: UNLESS OTHERWISE SPECIFIED

1. COSMETIC SPECIFICATION REFER TO WI-QA-038.



DIMENSIONS ARE IN mm [INCHES].				This print is the property of Laird Tech. and is loaned in confidence subject to return upon request and with the understanding that no copies shall be made without the written consent of Laird Tech. All rights to design or invention are reserved.		<b>Laird</b>		
L	UPDATE THE LOGO	05/13/15	QIU	PROJECT/PART NUMBER: <b>28B0625-100</b>		REV <b>L</b>	PART TYPE: <b>FERRITE CORE</b>	DRAWN BY: <b>JAZ</b>
K	UPDATE CO. LOGO CHG CHAMFER DESIGN	03/20/09	JRK	DATE: 09/24/93	SCALE: 2 : 1	MATERIAL: <b>Ferrite</b>		
J	UPDATE Z SPEC AND COMPANY LOGO	06/06/07	JRK	CAD #	TOOL #			
H	UPDATE MIN Z SPEC @100 MHZ	09/26/06	JRK	<b>28B0625-100-L</b>		<b>B0625</b>		
G	UPDATE Z SPEC ADD TEST REF#	12/06/04	JRK					
REV	DESCRIPTION	DATE	INT					