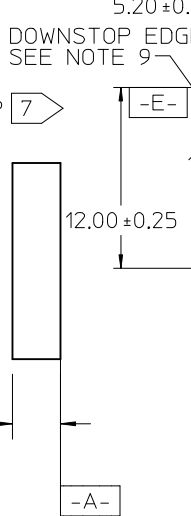
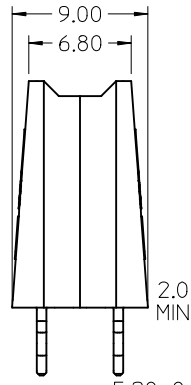
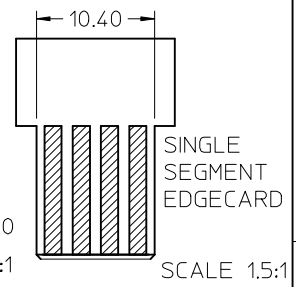
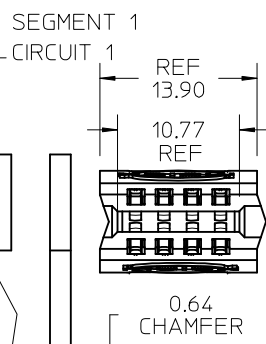
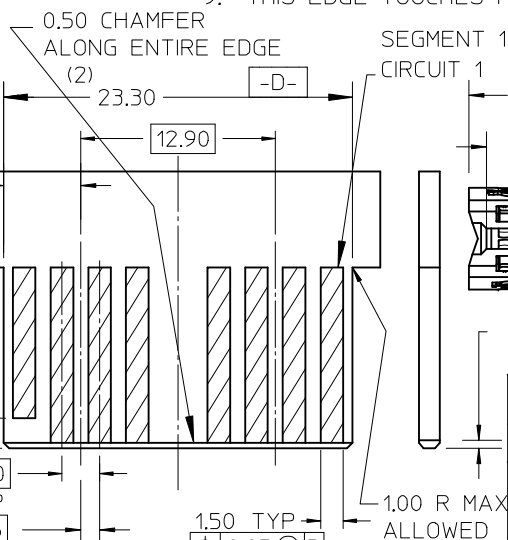


PCB LAYOUT: COMPONENT SIDE  
 \*\*\* = TO BE DETERMINED BY CUSTOMER



RECOMMENDED EDGE CARD LAYOUT  
 EDGE CARD THICKNESS: 1.57/062  
 PLATING: GOLD 30 μ INCHES MIN  
 OVER 150 μ INCHES NICKEL

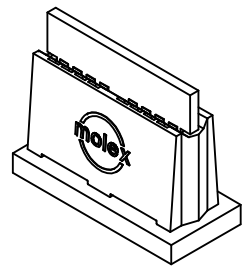


SINGLE SEGMENT MODULE  
 45845-1000  
 SCALE 1.5:1

SINGLE SEGMENT EDGECARD  
 SCALE 1.5:1

- NOTES:
- MATERIAL: HOUSING 30% GF LCP, UL94V-0, BLACK  
 MATERIAL: TERMINAL C5210 ALLOY
  - FINISH: SELECT GOLD 30 μ IN MIN IN CONTACT AREA  
 100 μ IN MIN IN PC TAIL AREA  
 BOTH OVER NICKEL 50 μ IN OVERALL
  - PRODUCT SPECIFICATION: PS-45719-001.
  - PACKAGING SPECIFICATION: ES-45714-001.
  - DIMENSIONS GIVEN ACROSS CENTERLINES ARE SYMMETRICAL ABOUT THOSE CENTERLINES WITHIN HALF THE TOTAL TOLERANCE.
  - PCB THICKNESS: 2.36 MIN  
 EDGE CARD THICKNESS: 1.57±0.08
  - PCB HOLE SPECIFICATION: SEE PS-45719-001.
  - THIS PART IS RoHS COMPLIANT. SEE ES-45482-999 FOR LABEL REQUIREMENTS.
  - THIS EDGE TOUCHES HOUSING WHEN EDGE CARD IS FULLY SEATED

TOOLING STATUS	MATERIAL NUMBER	SEGMENTS	FINISH (SHT 2)	VOID LOCATIONS
TOOLED	45845-1000	1	1	NONE
TOOLED	45845-0001	2	1	NONE
TOOLED	45845-0002	3	1	NONE
TOOLED	45845-0003	4	1	NONE
TOOLED	45845-1001	2	1	SEG 1 CKT 4, 8
TOOLED	45845-1003	3	1	SEGS 1, 2, CKTS 3,7,12,16
TOOLED	45845-3001	2	1	SEG 1 CKTS 3,4,7,8



REVISE CHART VOID LOCS	2015/03/24	DESCRIPTION
EC NO: UCP2015-3755	2015/03/12	
DRWN: JSCHAFFER		
CHKD:		
APPR: APATEL		
M6		

GENERAL TOLERANCES (UNLESS SPECIFIED)	
	mm INCH
4 PLACES	± --- ± ---
3 PLACES	± --- ± ---
2 PLACES	± 0.25 ± ---
1 PLACE	± --- ± ---
ANGULAR ± 1/2°	
DRAFT WHERE APPLICABLE MUST REMAIN WITHIN DIMENSIONS	

DIMENSION STYLE	
MM ONLY	
DRAWN BY	DATE
MARGULIS	2004/08/05
CHECKED BY	DATE
MARGULIS	2004/08/05
APPROVED BY	DATE
MARGULIS	2004/08/05
MATERIAL NUMBER	SEE CHART
SIZE	A

SCALE	2:1	DESIGN UNITS	METRIC	THIRD ANGLE PROJECTION
TITLE				
POWER EDGE ASSEMBLY SIGNAL VERTICAL CPI				
molex MOLEX INCORPORATED				
DOCUMENT NO.			SHEET NO.	
SD-45845-001			1 OF 3	
THIS DRAWING CONTAINS INFORMATION THAT IS PROPRIETARY TO MOLEX INCORPORATED AND SHOULD NOT BE USED WITHOUT WRITTEN PERMISSION				

6

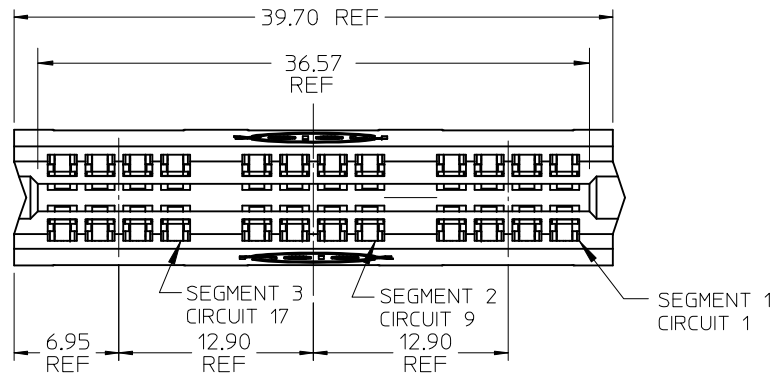
5

4

3

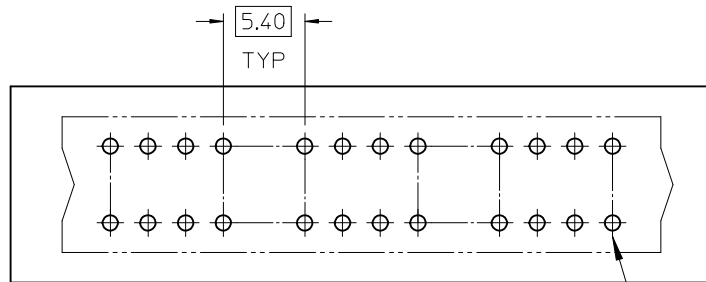
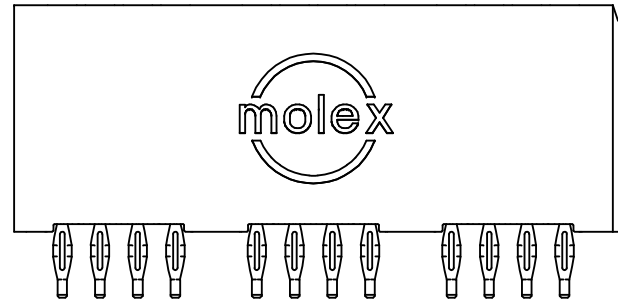
2

1

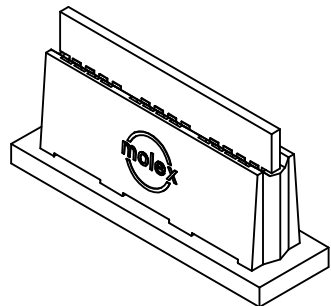
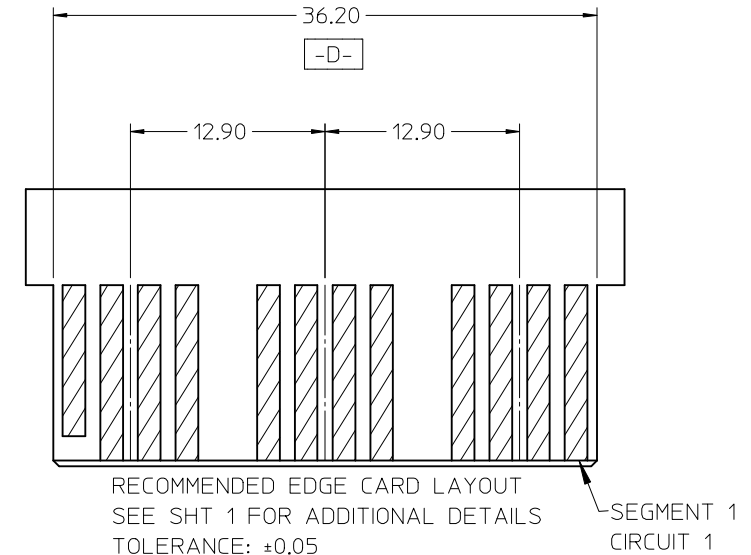


## NOTES

1. FOR NOTES AND DIMENSIONS NOT SHOWN SEE SHEET 1



PCB LAYOUT: COMPONENT SIDE

SEGMENT 1  
CIRCUIT 1

EC NO: UCP2015-3755	DRWN: JSCHAFFER	2015/03/12	CHKD: APATEL	2015/03/24	DESCRIPTION
M6	REV				

GENERAL TOLERANCES  
(UNLESS SPECIFIED)

	mm	INCH
4 PLACES	± ---	± ---
3 PLACES	± ---	± ---
2 PLACES	± 0.25	± ---
1 PLACE	± ---	± ---

ANGULAR ±1/2°

DRAFT WHERE APPLICABLE  
MUST REMAIN  
WITHIN DIMENSIONSDIMENSION STYLE  
MM ONLY

DRAWN BY	DATE
MARGULIS	2004/08/05
CHECKED BY	DATE
MARGULIS	2004/08/05
APPROVED BY	DATE
MARGULIS	2004/08/05

MATERIAL NUMBER  
SEE CHARTSIZE  
ATHIS DRAWING CONTAINS INFORMATION THAT IS PROPRIETARY TO MOLEX  
INCORPORATED AND SHOULD NOT BE USED WITHOUT WRITTEN PERMISSIONSCALE  
2:1DESIGN UNITS  
METRICTHIRD ANGLE  
PROJECTION

TITLE

POWER EDGE ASSEMBLY  
SIGNAL VERTICAL  
CPI

MOLEX INCORPORATED

DOCUMENT NO.  
SD-45845-001SHEET NO.  
2 OF 3

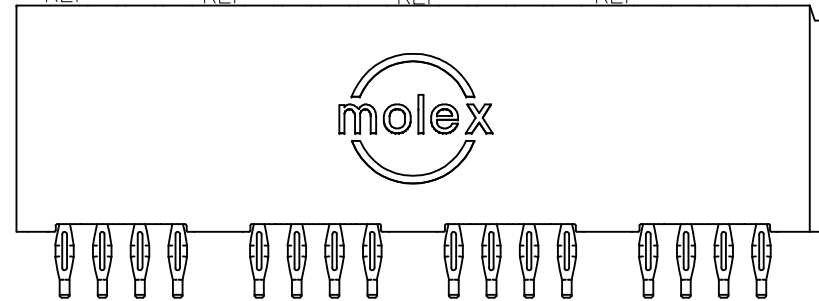
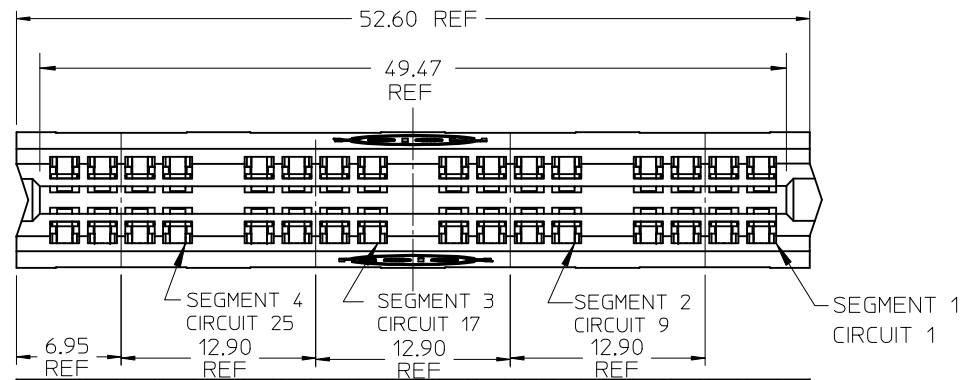
5

4

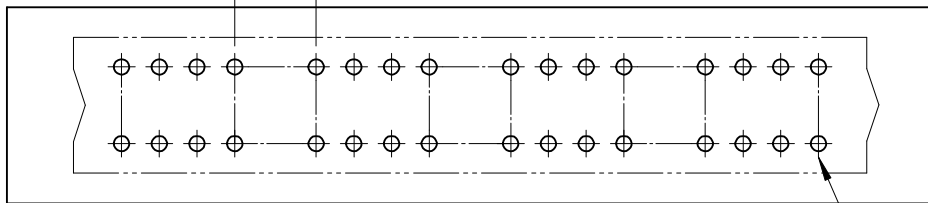
3

2

1



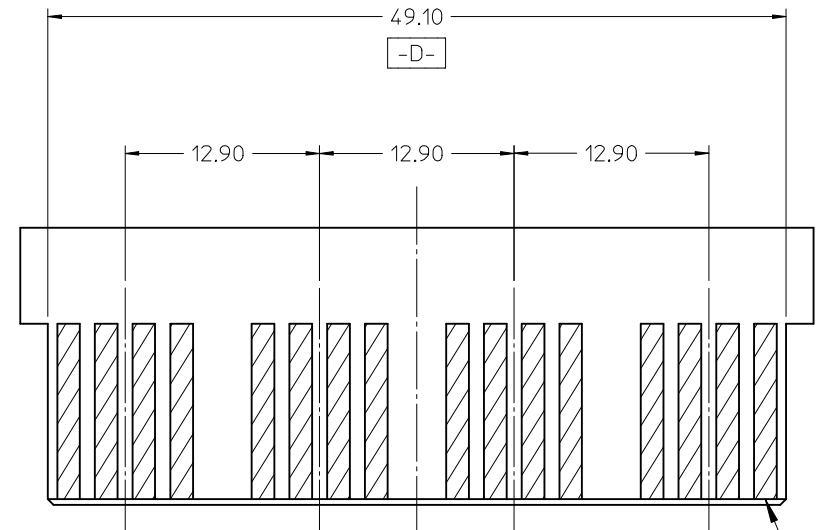
5.40  
TYP 3



PCB LAYOUT: COMPONENT SIDE

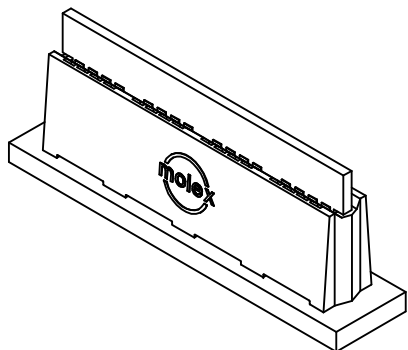
SEGMENT 1  
CIRCUIT 1

NOTE  
FOR ALL OTHER DIMENSIONS AND NOTES SEE SHEET 1.



SEGMENT 1  
CIRCUIT 1

RECOMMENDED EDGE CARD LAYOUT  
SEE SHT 1 FOR ADDITIONAL DETAIL  
TOLERANCE:  $\pm 0.05$



EC NO: UCP2015-3755	DRWN: JSCHAFFER	2015/03/12	DESCRIPTION
CHKD:	APPR: APATEL	2015/03/24	
M6	REV		

GENERAL TOLERANCES  
(UNLESS SPECIFIED)

	mm	INCH
4 PLACES	$\pm$ ---	$\pm$ ---
3 PLACES	$\pm$ ---	$\pm$ ---
2 PLACES	$\pm 0.25$	$\pm$ ---
1 PLACE	$\pm$ ---	$\pm$ ---

ANGULAR  $\pm 1/2^\circ$

DRAFT WHERE APPLICABLE  
MUST REMAIN  
WITHIN DIMENSIONS

DIMENSION STYLE  
MM ONLY

DRAWN BY	DATE
MARGULIS	2004/08/05
CHECKED BY	DATE
MARGULIS	2004/08/05
APPROVED BY	DATE
MARGULIS	2004/08/05

MATERIAL NUMBER  
SEE CHART

SIZE  
A

SCALE  
2:1

DESIGN UNITS  
METRIC

THIRD ANGLE  
PROJECTION

TITLE  
POWER EDGE ASSEMBLY  
SIGNAL VERTICAL  
CPI

MOLEX INCORPORATED

DOCUMENT NO.  
SD-45845-001

SHEET NO.  
3 OF 3