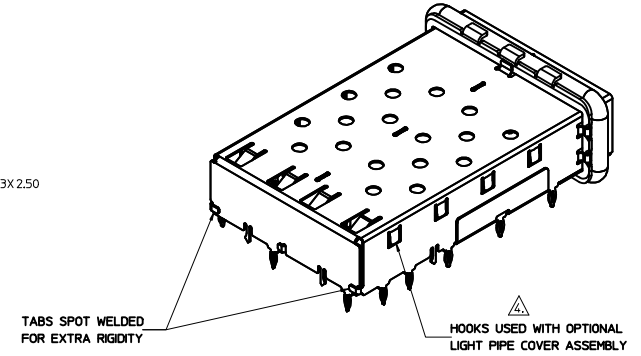
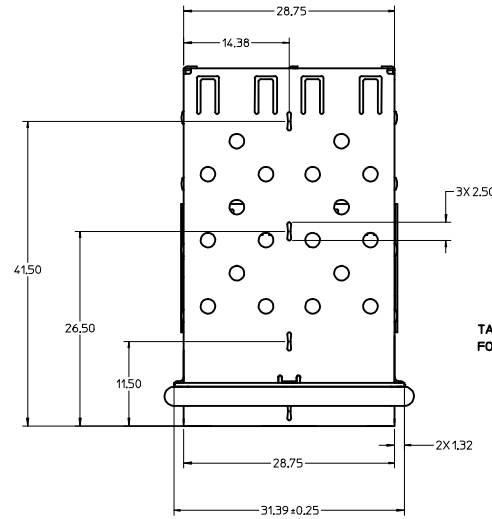
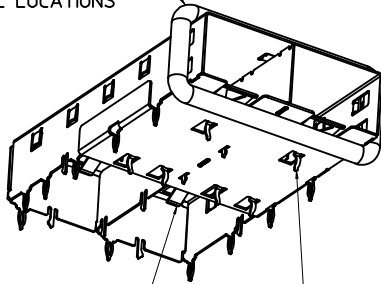


NOTES:

1. PRESS FIT LEGS 3.05 LONG-  
1.57 MINIMUM PCB THICKNESS FOR SINGLE SIDED USE.  
3.00 MINIMUM PCB THICKNESS FOR BELLY TO BELLY USE.
  2. MATERIAL: COPPER ALLOY  
PLATING: NONE  
NOTE: A NICKEL PLATED VERSION OF THIS ASSEMBLY IS AVAILABLE.  
REFER TO DOCUMENT SD-74722-004
  3. REFERENCE DOCUMENTS:  
PRODUCT SPECIFICATION: PS-74728-000  
COSMETIC SPECIFICATIONS: WI-HP-2774 AND WI-HPA-7-0093  
TEST SUMMARY: TS-73927-0250.
- ⚠ MATES WITH SERIES 74727. LIGHT PIPE COVER ASSEMBLY.
5. NO RoHS EXEMPTIONS.



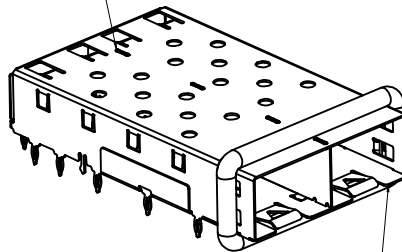
360° ELASTOMER EMI GASKET COMPLIES WITH (SFP) MSA BOARD AND BEZEL LOCATIONS



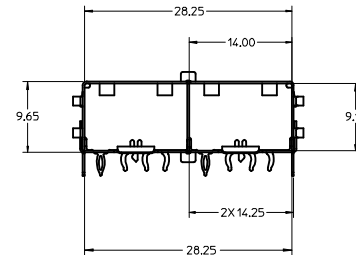
EMI FINGERS CONTACT ADAPTER

6 UNDER BELLY EMI PINS

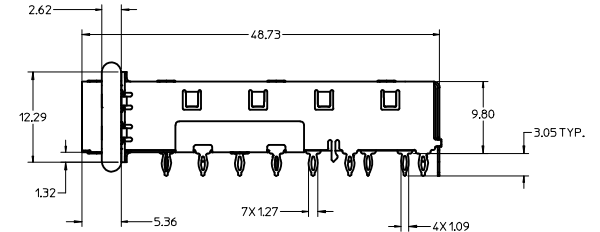
INNER WALL TABS ARE COINED OVER BASE AND COVER FOR RIGIDITY



DIMENSIONS OF EACH INNER CAGE DESIGNED TO FUNCTION WITH SMALL FORM-FACTOR PLUGGABLE (SFP) TRANSCEIVER



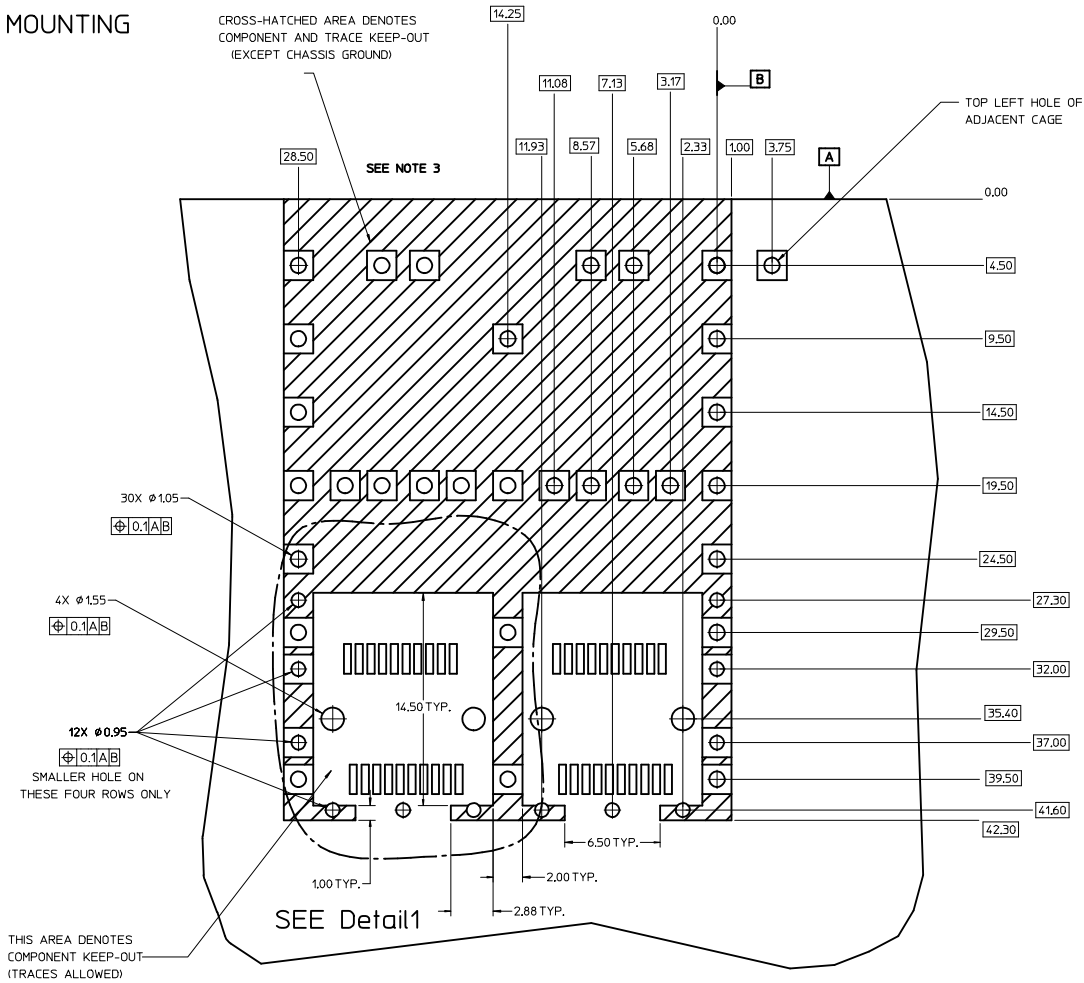
GASKET AND FRAME REMOVED FOR CLARITY



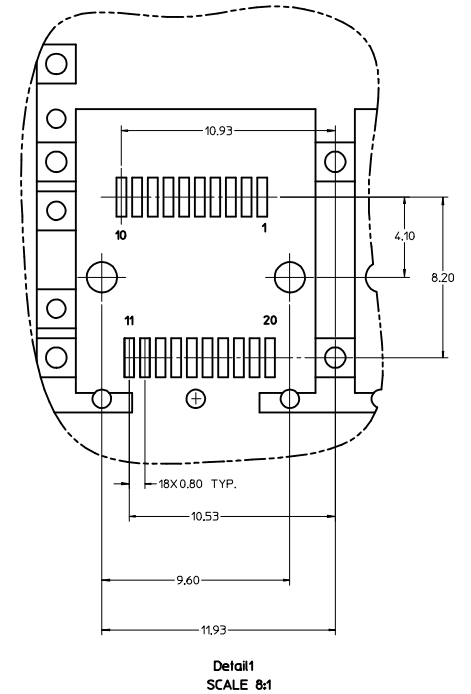
PART NUMBER	ELASTOMERIC GASKET FLAMMABILITY RATING
739270250	
739270254	EQUATE TO UL94 V-0

<b>SEE REVISION TABLE</b> EC NO: CPG2014-3377 D: DRWNR/CHEN08 2014/05/05 CHKD/MAN07 2014/06/25 APPR/CHEN08 2014/06/26 REV DESCRIPTION	QUALITY SYMBOLS	GENERAL TOLERANCES (UNLESS SPECIFIED)	DIMENSION STYLE	SCALE	DESIGN UNITS	THIRD ANGLE PROJECTION
	▽=0	4 PLACES ± 0.13	MM ONLY	3:1	METRIC	
	▽=0	3 PLACES ± 0.25				
	▽=0	2 PLACES ± 0.25				
		ANGULAR ± 1°				
		DRAFT WHERE APPLICABLE MUST REMAIN WITHIN DIMENSIONS				
			MATERIAL NO.	DOCUMENT NO.		
			SEE P/N TABLE	SD-73927-250		
			THIS DRAWING CONTAINS INFORMATION THAT IS PROPRIETARY TO MOLEX INCORPORATED AND SHOULD NOT BE USED WITHOUT WRITTEN PERMISSION			
						SHEET NO. 1 OF 5

# PCB LAYOUT FOR BELLY TO BELLY MOUNTING



## HOST CONNECTOR DETAIL



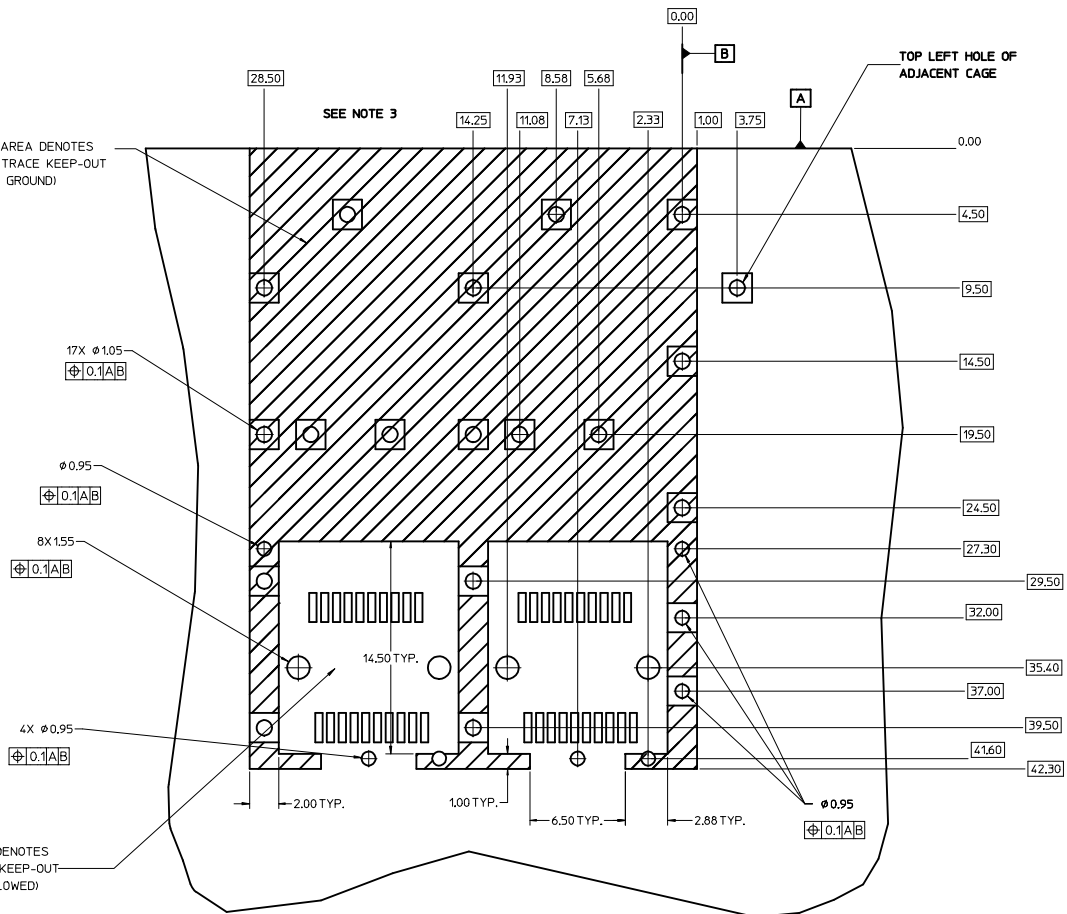
### NOTES:

1. PADS AND VIAS GO TO CHASSIS GROUND, (34 PLACES), RECOMMENDED PADS TO BE 2mm SQUARE.
2. PLATING OPTIONAL FOR THROUGH HOLES (8 PLACES)
3. RECOMMENDED PLATING INCLUDES HASL, IMMERSION (GOLD, SILVER, OR TIN), AND OSP.
4. HOLE PATTERN REPEATS FOR EACH PORT, SPACING BETWEEN PORTS IS 14.25
5. CONNECTOR PAD LAYOUT PER SFP MSA. WILL ACCOMODATE MOLEX CONNECTOR SERIES 74441 OR EQUIVALENT.

REV	DESCRIPTION	QUALITY SYMBOLS	GENERAL TOLERANCES (UNLESS SPECIFIED)		DIMENSION STYLE		SCALE	DESIGN UNITS	THIRD ANGLE PROJECTION
			mm	INCH	MM ONLY	DATE			
∇=0		4 PLACES	±0.13	±---	DATE	2003/09/25	6:1	METRIC	<b>1X2 SFP GANGED CAGE ASSEMBLY PRESS FIT</b> 
∇=0		3 PLACES	±---	±---	CHECKED BY	2003/10/27			
∇=0		2 PLACES	±0.13	±---	DATE				
		1 PLACE	±0.25	±---	APPROVED BY				
		0 PLACE	±	±	DATE	2010/03/16			
<b>SEE REVISION TABLE</b> EC NO: CPG2014-3377 DRAWN BY: 2014/05/05 CHKD BY: 2014/06/25 APPR: 2014/06/26			ANGULAR ± 1 ° DRAFT WHERE APPLICABLE MUST REMAIN WITHIN DIMENSIONS		MATERIAL NO. <b>SEE P/N TABLE</b>		DOCUMENT NO. <b>SD-73927-250</b>		SHEET NO. 2 OF 5
THIS DRAWING CONTAINS INFORMATION THAT IS PROPRIETARY TO MOLEX INCORPORATED AND SHOULD NOT BE USED WITHOUT WRITTEN PERMISSION									

# PCB LAYOUT FOR SINGLE SIDE MOUNTING

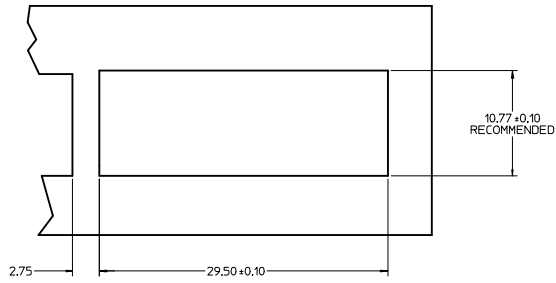
CROSS-HATCHED AREA DENOTES  
COMPONENT AND TRACE KEEP-OUT  
(EXCEPT CHASSIS GROUND)



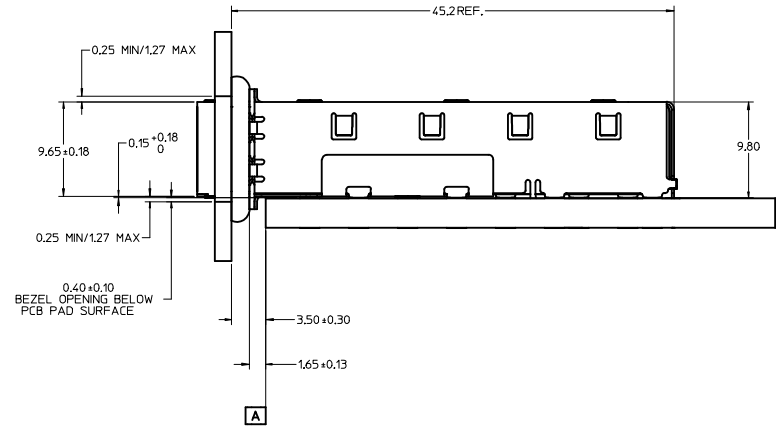
## NOTES:

1. PADS AND VIAS GO TO CHASSIS GROUND, (19 PLACES). RECOMMENDED PADS TO BE 2mm SQUARE.
2. PLATING OPTIONAL FOR THROUGH HOLES (6 PLACES)
3. RECOMMENDED PLATING INCLUDES HASL, IMMERSION (GOLD, SILVER, OR TIN), AND OSP.
4. HOLE PATTERN REPEATS FOR EACH PORT, SPACING BETWEEN PORTS IS 14.25
5. CONNECTOR PAD LAYOUT PER SFP MSA. WILL ACCOMODATE MOLEX CONNECTOR SERIES 74441 OR EQUIVALENT.

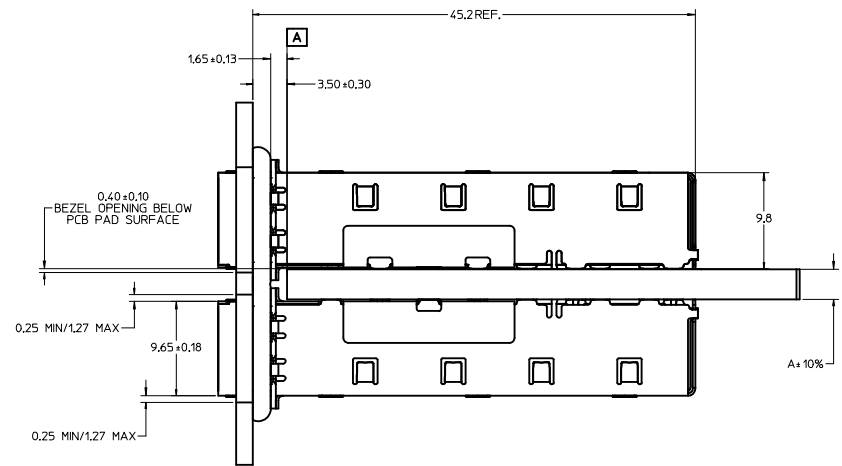
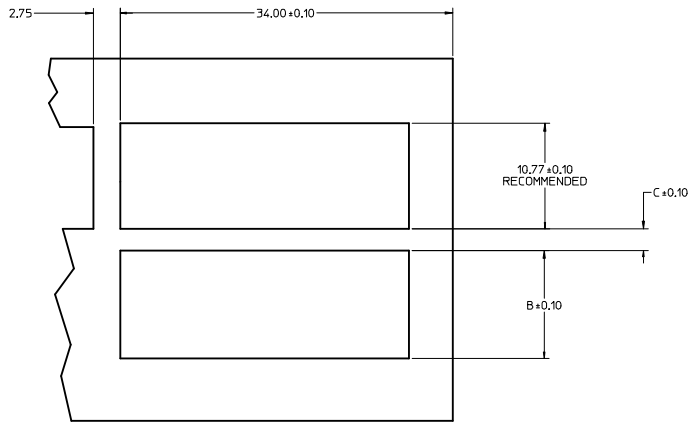
SEE REVISION TABLE		QUALITY SYMBOLS		GENERAL TOLERANCES (UNLESS SPECIFIED)		DIMENSION STYLE		SCALE	DESIGN UNITS	THIRD ANGLE PROJECTION
REV	DESCRIPTION	▽=0	▽=0	mm	INCH	MM ONLY	DATE	6:1	METRIC	☉
D	DRYNRCHEN08 2014/05/05 CHYKEMANG07 2014/06/25 APPRCHEN08 2014/06/26	▽=0	▽=0	±	±	+	KSI MONSO 2003/09/25			
		▽=0	▽=0	±0.13	±	+	BRUSSELL 2003/10/27			
		▽=0	▽=0	±0.25	±	+	APPROVED BY DATE KJANOTA 2010/03/16			
		ANGULAR ± 1 °		DRAFT WHERE APPLICABLE MUST REMAIN WITHIN DIMENSIONS		MATERIAL NO. DATE SEE P/N TABLE		DOCUMENT NO. DATE SD-73927-250		SHEET NO. 3 OF 5
<p>THIS DRAWING CONTAINS INFORMATION THAT IS PROPRIETARY TO MOLEX INCORPORATED AND SHOULD NOT BE USED WITHOUT WRITTEN PERMISSION</p>										



BEZEL AND BOARD POSITION DIMENSIONS FOR SINGLE SIDE MOUNTING



BEZEL AND BOARD POSITION DIMENSIONS FOR BELLY TO BELLY MOUNTING



NOTE:

1. FOR A GIVEN BOARD THICKNESS (A), DIMENSIONS (B) AND (C) ARE DIRECTLY AFFECTED.
2. USE RECOMMENDED DIMENSIONS AND TOLERANCES TO AID IN DEVELOPING BEZEL OPENING.
3. FOR EXAMPLE USING A BOARD THICKNESS OF .125" THE RECOMMENDED VALUES WOULD BE:

A= 3.18  
B= 11.03  
C= 2.23

REV	DESCRIPTION	QUALITY SYMBOLS	GENERAL TOLERANCES (UNLESS SPECIFIED)		DIMENSION STYLE	SCALE	DESIGN UNITS	THIRD ANGLE PROJECTION
			mm	INCH				
1	4 PLACES ± .005	▽=0	± .005	± .005	MM ONLY	4:1	METRIC	TITLE: 1X2 SFP GANGED CAGE ASSEMBLY PRESS FIT <b>molex</b> MATERIAL NO. SD-73927-250 DOCUMENT NO. SD-73927-250 SHEET NO. 4 OF 5
2	3 PLACES ± .010	▽=0	± .010	± .010	MM ONLY	4:1	METRIC	
3	2 PLACES ± 0.13	▽=0	± 0.13	± 0.13	MM ONLY	4:1	METRIC	
4	1 PLACE ± 0.25	▽=0	± 0.25	± 0.25	MM ONLY	4:1	METRIC	
5	0 PLACE ± .005	▽=0	± .005	± .005	MM ONLY	4:1	METRIC	
SEE REVISION TABLE EEC NO: CPG2014-3377 DRAWN BY: DRWNRCHEN08 2014/05/05 CHECKED BY: CHYKOWANG07 2014/06/25 APPROVED BY: APPRRCRCHEN08 2014/06/26			ANGULAR ± 1° DRAFT WHERE APPLICABLE MUST REMAIN WITHIN DIMENSIONS		DRAWN BY: KSI MONSO 2003/09/25 CHECKED BY: BRUSSELL 2003/10/27 APPROVED BY: KJANOTA 2010/03/16		TITLE: 1X2 SFP GANGED CAGE ASSEMBLY PRESS FIT <b>molex</b> MATERIAL NO. SD-73927-250 DOCUMENT NO. SD-73927-250 SHEET NO. 4 OF 5	
THIS DRAWING CONTAINS INFORMATION THAT IS PROPRIETARY TO MOLEX INCORPORATED AND SHOULD NOT BE USED WITHOUT WRITTEN PERMISSION								

REVISION HISTORY

DATE	REV	DESCRIPTION
10/27/2003	A	INITIAL RELEASE
10/06/2005	B	ADDED PCB AND BEZEL LAYOUT
12/10/2009	C	ADDED ISO VIEW WITH WELD CALLOUT
05/05/2014	D	1. ADDED 739270254 [SHT 1] 2. ADDED "MM 3D MODEL: TM-74722-000" ON LEFT TOP CORNER [SHT 1] 3. NOTE 5 CHANGED AS "NO RoHS EXEMPTIONS" [SHT 1] 4. REMOVE ALL DIMENSIONS IN INCH [SHT 1 TO 4].

<b>SEE REVISION TABLE</b> IEC NO: CPG2014-3377 D 2014/05/05 CHYKDEWANG07 2014/06/25 APPR:RCHEN08 2014/06/26	QUALITY SYMBOLS	GENERAL TOLERANCES (UNLESS SPECIFIED)	DIMENSION STYLE	SCALE	DESIGN UNITS	THIRD ANGLE PROJECTION
	▽=0	4 PLACES ± mm INCH	MM ONLY	3:1	METRIC	☉
	▽=0	3 PLACES ± 0.13				
	▽=0	2 PLACES ± 0.25				
	ANGULAR ± 1°	DRAFT WHERE APPLICABLE MUST REMAIN WITHIN DIMENSIONS	MATERIAL NO.	DATE	TITLE	
			SEE P/N TABLE	2010/03/16	1X2 SFP GANGED CAGE ASSEMBLY PRESS FIT	
			SIZE D			
			THIS DRAWING CONTAINS INFORMATION THAT IS PROPRIETARY TO MOLEX INCORPORATED AND SHOULD NOT BE USED WITHOUT WRITTEN PERMISSION			

**molex**

DOCUMENT NO. SD-73927-250

SHEET NO. 5 OF 5

**NOTES:**

1. PRESS FIT LEGS 0.120" LONG-  
0.062 [1.57] MINIMUM PCB THICKNESS FOR SINGLE SIDED USE.  
0.118 [3.00] MINIMUM PCB THICKNESS FOR BELLY TO BELLY USE.

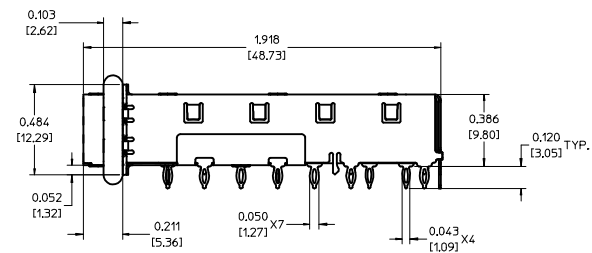
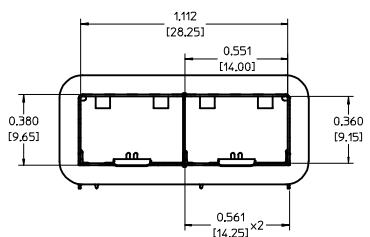
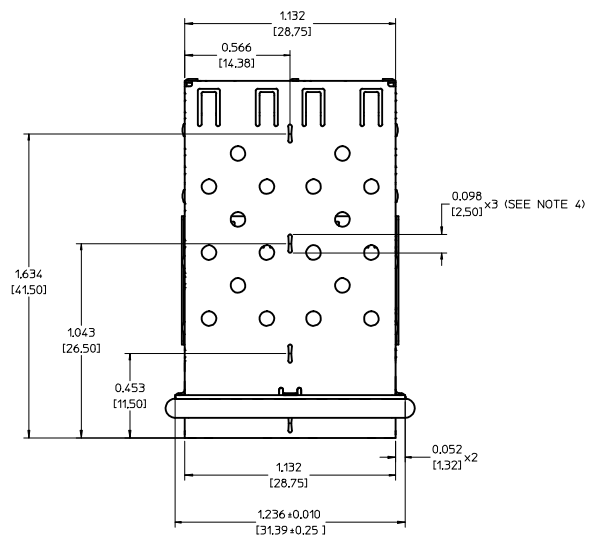
2. MATERIAL: COPPER ALLOY  
PLATING: NONE

NOTE: A NICKEL PLATED VERSION OF THIS ASSEMBLY IS AVAILABLE.  
REFER TO DOCUMENT SD-74722-004

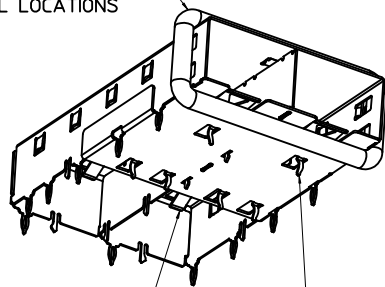
3. REFERENCE DOCUMENTS:  
PRODUCT SPECIFICATION: PS-74728-000  
COSMETIC SPECIFICATIONS: WI-HP-2774 AND WI-HPA-7-0093  
TEST SUMMARY: TS-74722-0001.

4. MATES WITH SERIES 74727, LIGHT PIPE COVER ASSEMBLY.

5. THIS PART MEETS THE RESTRICTION OF HAZARDOUS SUBSTANCES IN  
ELECTRICAL AND ELECTRONIC EQUIPMENT (ROHS) DIRECTIVE (2002/95/EC).



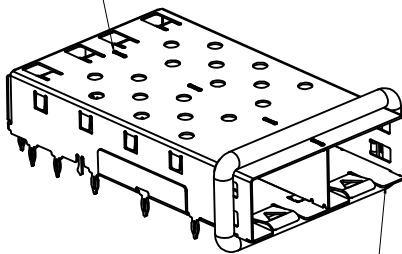
360° ELASTOMER EMI GASKET  
COMPLIES WITH (SFP) MSA  
BOARD AND BEZEL LOCATIONS



EMI FINGERS  
CONTACT ADAPTER

6 UNDER BELLY EMI PINS

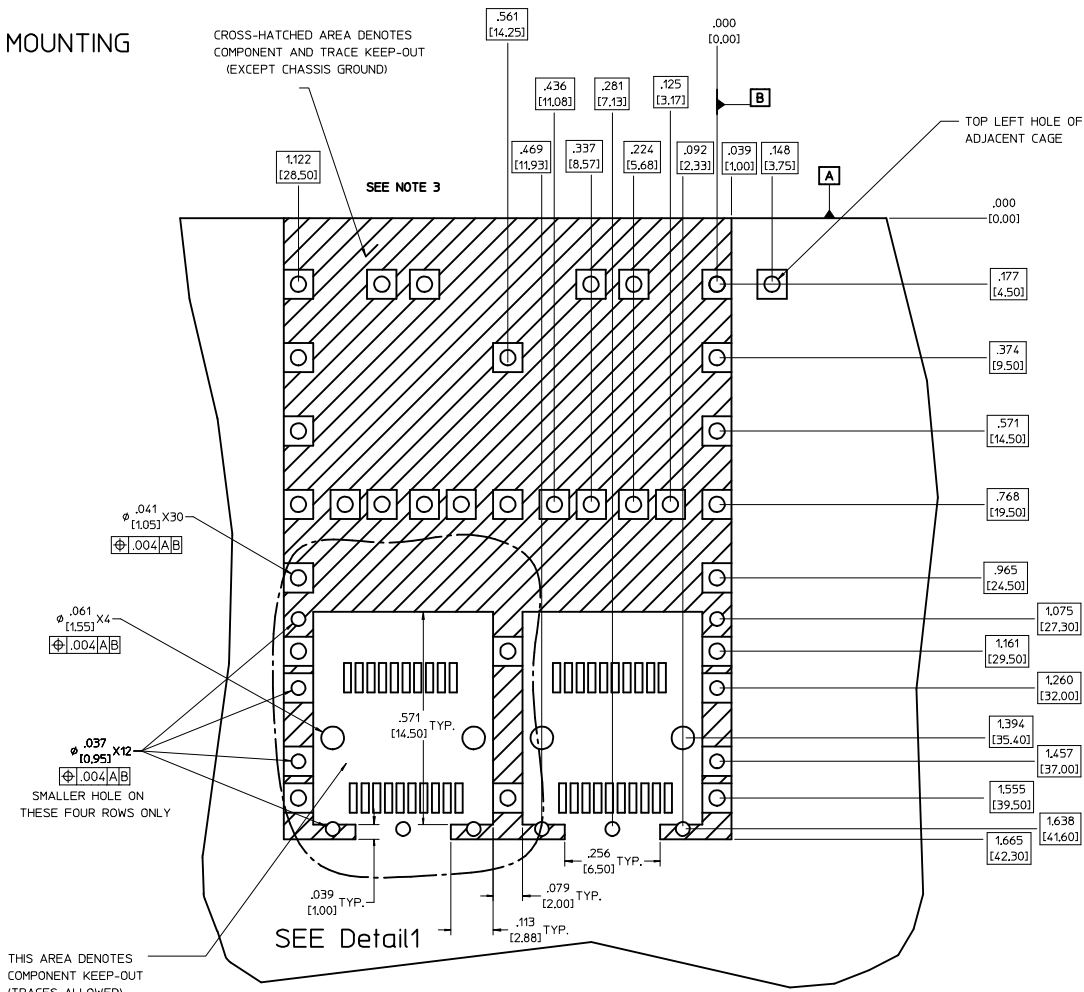
INNER WALL TABS ARE COINED  
OVER BASE AND COVER FOR RIGIDITY



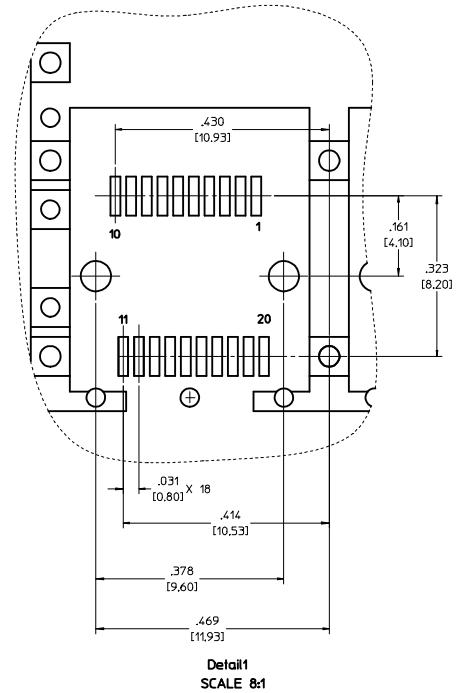
DIMENSIONS OF EACH INNER CAGE DESIGNED  
TO FUNCTION WITH SMALL FORM-FACTOR  
PLUGGABLE (SFP) TRANSCEIVER

ENTER DESCRIPTION EC NO: USY2006-0073 DRWKS:IMONSO 2006/01/17 CHKD:BRUSSELL 2006/01/20 APPR:BRUSSELL 2006/01/25	QUALITY SYMBOLS	GENERAL TOLERANCES (UNLESS SPECIFIED)	DIMENSION STYLE	SCALE	DESIGN UNITS	THIRD ANGLE PROJECTION	
	▼=0 ▽=0	mm ±--- INCH ±---	IN/MM 3:1	METRIC	DRAWN BY: KSI MONSO CHECKED BY: BRUSSELL APPROVED BY: BRUSSELL	DATE: 2003/09/25 DATE: 2003/10/27 DATE: 2003/10/27	TITLE: 1X2 SFP GANGED CAGE ASSEMBLY, PRESS FIT
		4 PLACES ±--- ±--- 3 PLACES ±--- ±.005 2 PLACES ±.13 ±.010 1 PLACE ±0.25 ±---	MATERIAL NO: 747220001 SIZE: D	MOLEX INCORPORATED	SHEET NO: 1 OF 5		
		DRAFT WHERE APPLICABLE MUST REMAIN WITHIN DIMENSIONS	THIS DRAWING CONTAINS INFORMATION THAT IS PROPRIETARY TO MOLEX INCORPORATED AND SHOULD NOT BE USED WITHOUT WRITTEN PERMISSION				

# PCB LAYOUT FOR BELLY TO BELLY MOUNTING



## HOST CONNECTOR DETAIL

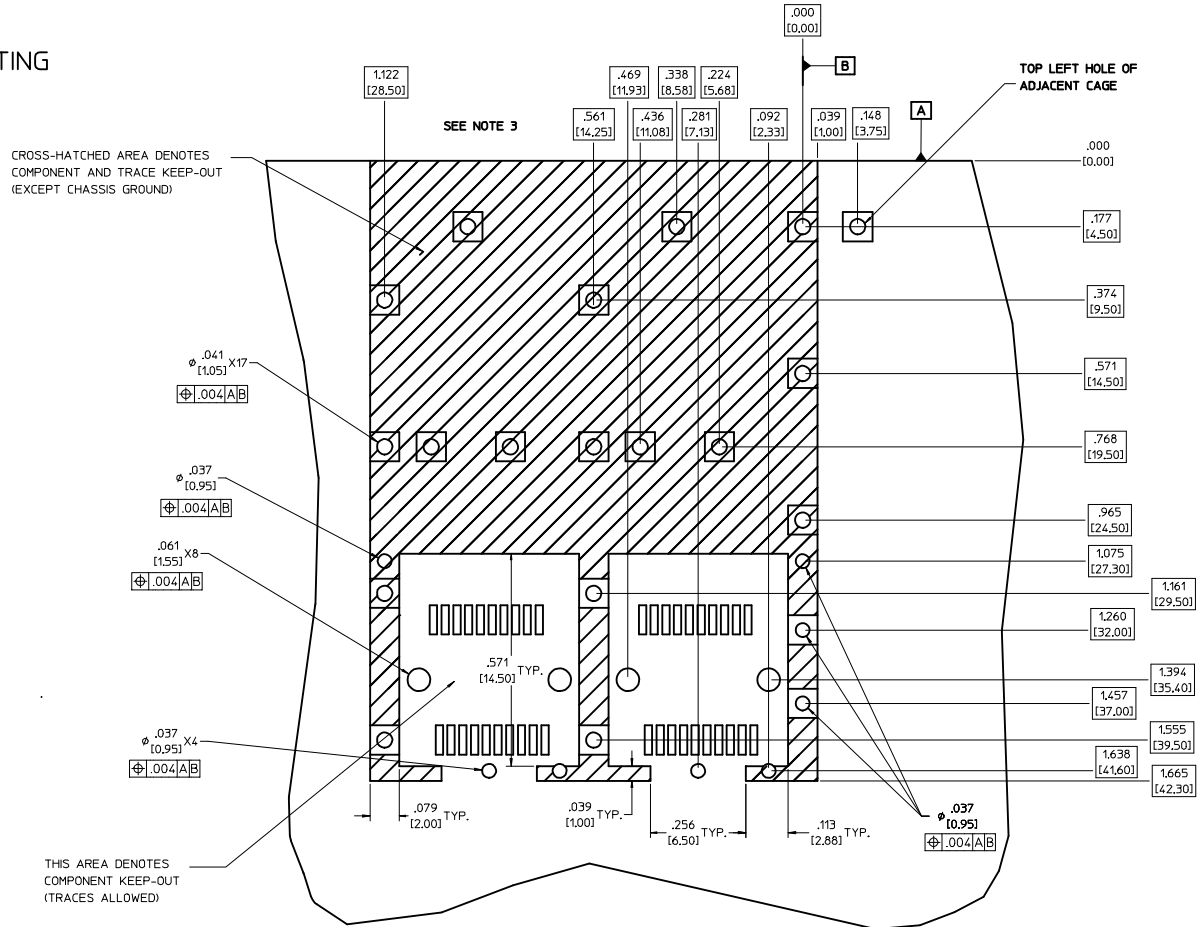


### NOTES:

- PADS AND VIAS GO TO CHASSIS GROUND. (34 PLACES).  
RECOMMENDED PADS TO BE 2mm SQUARE.
- PLATING OPTIONAL FOR THROUGH HOLES (8 PLACES)
- RECOMMENDED PLATING INCLUDES HASL, IMMERSION (GOLD, SILVER, OR TIN), AND OSP.
- HOLE PATTERN REPEATS FOR EACH PORT.  
SPACING BETWEEN PORTS IS 0.561 [14.25]
- CONNECTOR PAD LAYOUT PER SFP MSA. WILL ACCOMMODATE MOLEX CONNECTOR SERIES 74441 OR EQUIVALENT.

<b>ENTER DESCRIPTION</b> IEC NO. USY2006-0073 DRAWN BY DRANKS IMONSON 2006/01/17 CHYK BRUSSELL 2006/01/20 APPR. BRUSSELL 2006/01/25	<b>QUALITY SYMBOLS</b> ▽=0 ▽=0	<b>GENERAL TOLERANCES (UNLESS SPECIFIED)</b>		<b>DIMENSION STYLE</b> IN/MM	<b>SCALE</b> 6:1	<b>DESIGN UNITS</b> METRIC	THIRD ANGLE PROJECTION
		4 PLACES ± --- ± --- 3 PLACES ± --- ± .005 2 PLACES ± 0.13 ± .010 1 PLACE ± 0.25 ± --- ANGULAR ± 1 °	DRAWN BY DATE KS IMONSON 2003/09/25 CHECKED BY DATE BRUSSELL 2003/10/27 APPROVED BY DATE BRUSSELL 2003/10/27	<b>TITLE</b> 1X2 SFP GANGED CAGE ASSEMBLY, PRESS FIT		MOLEX MOLEX INCORPORATED	
<b>DRAFT WHERE APPLICABLE MUST REMAIN WITHIN DIMENSIONS</b>		MATERIAL NO. 747220001	DOCUMENT NO. SD-74722-001	SHEET NO. 2 OF 5			
THIS DRAWING CONTAINS INFORMATION THAT IS PROPRIETARY TO MOLEX INCORPORATED AND SHOULD NOT BE USED WITHOUT WRITTEN PERMISSION							

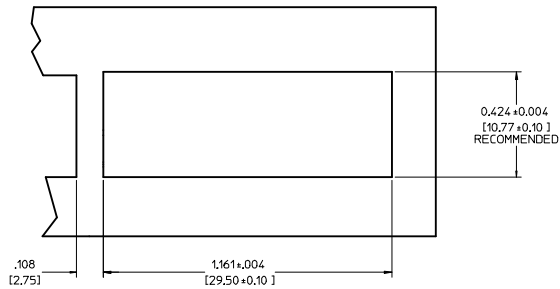
# PCB LAYOUT FOR SINGLE SIDE MOUNTING



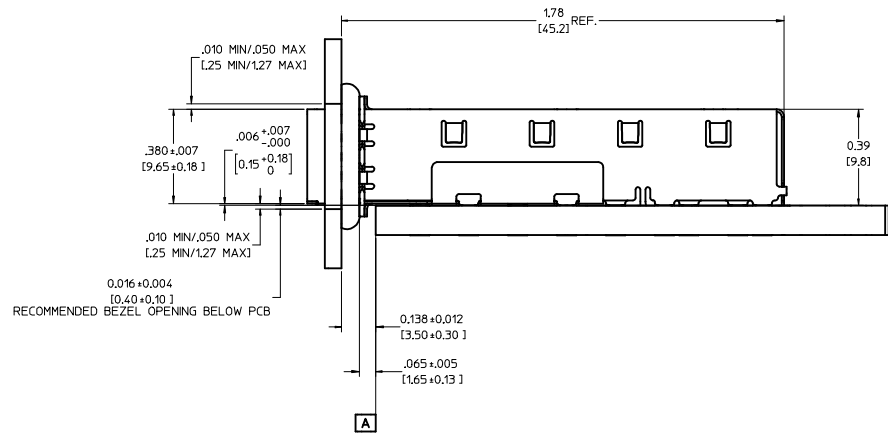
- NOTES:**
- PADS AND VIAS GO TO CHASSIS GROUND. (19 PLACES).  
RECOMMENDED PADS TO BE 2mm SQUARE.
  - PLATING OPTIONAL FOR THROUGH HOLES (6 PLACES)
  - RECOMMENDED PLATING INCLUDES HASL, IMMERSION (GOLD, SILVER, OR TIN), AND OSP.
  - HOLE PATTERN REPEATS FOR EACH PORT.  
SPACING BETWEEN PORTS IS 0.561 [14.25]
  - CONNECTOR PAD LAYOUT PER SFP MSA. WILL ACCOMMODATE MOLEX  
CONNECTOR SERIES 74441 OR EQUIVALENT.

<b>ENTER DESCRIPTION</b> EC NO: USY2006-0073 DRAWN BY: KSI/MONSON 2006/01/17 CHECKED BY: CHYD/BRUSSELL 2006/01/20 APPROVED BY: APPR/BRUSSELL 2006/01/25 REV:	<b>QUALITY SYMBOLS</b> $\nabla=0$ $\nabla=0$	<b>GENERAL TOLERANCES (UNLESS SPECIFIED):</b>		<b>DIMENSION STYLE</b> IN/MM	<b>SCALE</b> 6:1	<b>DESIGN UNITS</b> METRIC	<input checked="" type="checkbox"/> THIRD ANGLE PROJECTION
		4 PLACES ±.005 ±.005 3 PLACES ±.005 ±.005 2 PLACES ±0.13 ±.010 1 PLACE ±0.25 ±.010 ANGULAR ± 1°	DRAWN BY: KSI/MONSON DATE: 2003/09/25 CHECKED BY: BRUSSELL DATE: 2003/10/27 APPROVED BY: BRUSSELL DATE: 2003/10/27	<b>TITLE</b> 1X2 SFP GANGED CAGE ASSEMBLY, PRESS FIT		<b>MOLEX INCORPORATED</b>	
<b>DRAFT WHERE APPLICABLE MUST REMAIN WITHIN DIMENSIONS</b>		<b>MATERIAL NO.</b> 747220001	<b>DOCUMENT NO.</b> SD-74722-001	<b>SHEET NO.</b> 3 OF 5			
THIS DRAWING CONTAINS INFORMATION THAT IS PROPRIETARY TO MOLEX INCORPORATED AND SHOULD NOT BE USED WITHOUT WRITTEN PERMISSION							

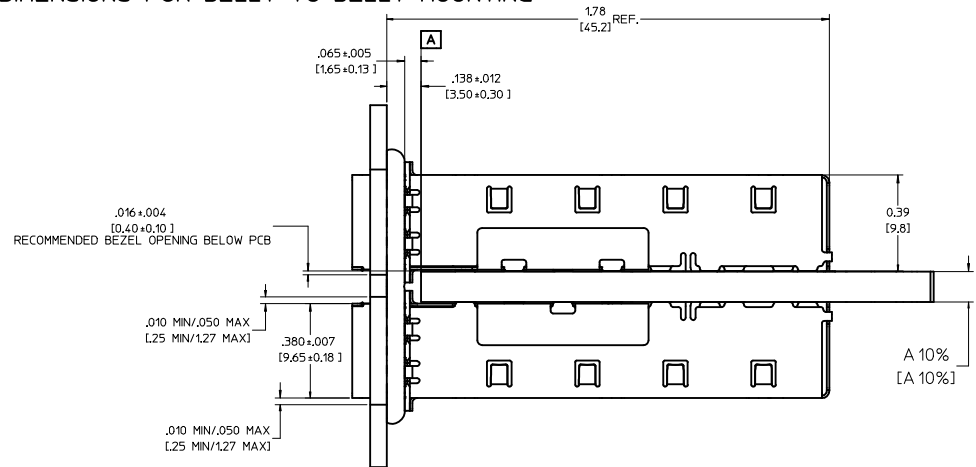
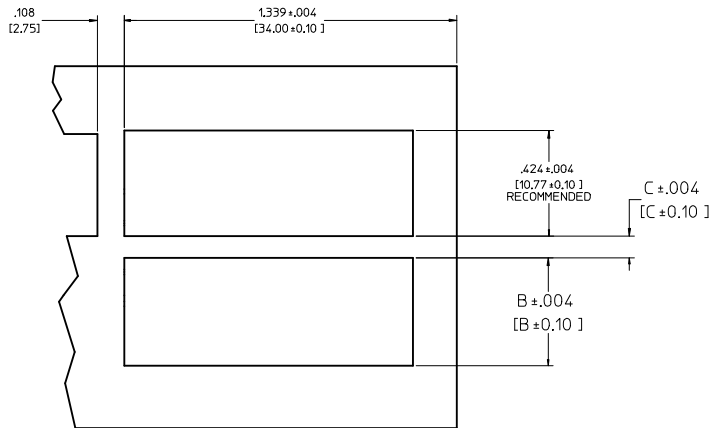




BEZEL AND BOARD POSITION DIMENSIONS FOR SINGLE SIDE MOUNTING



BEZEL AND BOARD POSITION DIMENSIONS FOR BELLY TO BELLY MOUNTING



NOTE: FOR A GIVEN BOARD THICKNESS (A), DIMENSIONS (B) AND (C) ARE DIRECTLY AFFECTED.

USE RECOMMENDED DIMENSIONS AND TOLERANCES TO AID IN DEVELOPING BEZEL OPENING.

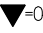
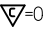

FOR EXAMPLE USING A BOARD THICKNESS OF .125" THE RECOMMENDED VALUES WOULD BE:

- A= .125/3.18 ±10%
- B= .434/11.03 ±.004
- C= .088/2.23 ±.004

<b>ENTER DESCRIPTION</b> IEC NO: USY2006-0073 DRAWN BY: KSI MONSON 2006/01/17 CHYKORUSSELL 2006/01/20 APPR: BRUSSELL 2006/01/25	<b>QUALITY SYMBOLS</b> ▽=0 ▽=0	<b>GENERAL TOLERANCES (UNLESS SPECIFIED)</b>		<b>DIMENSION STYLE</b> IN/MM	<b>SCALE</b> 4:1	<b>DESIGN UNITS</b> METRIC	THIRD ANGLE PROJECTION	
		4 PLACES ±.005 3 PLACES ±.005 2 PLACES ±.013 1 PLACE ±.025	±.005 ±.010 ±.025	DRAWN BY: KSI MONSON 2003/09/25 CHECKED BY: BRUSSELL 2003/10/27 APPROVED BY: BRUSSELL 2003/10/27	DATE: 2003/09/25 DATE: 2003/10/27 DATE: 2003/10/27	<b>MOLEX INCORPORATED</b>	<b>1X2 SFP GANGED CAGE ASSEMBLY, PRESS FIT</b>	MATERIAL NO: 747220001 DOCUMENT NO: SD-74722-001
DRAFT WHERE APPLICABLE MUST REMAIN WITHIN DIMENSIONS		THIS DRAWING CONTAINS INFORMATION THAT IS PROPRIETARY TO MOLEX INCORPORATED AND SHOULD NOT BE USED WITHOUT WRITTEN PERMISSION						

20 19 18 17 16 15 14 13 12 11 10 9 8 7 6 5 4 3 2 1

DATE	REV	CHANGES	COMMENTS
10/27/2003	A	INITIAL RELEASE	N/A
10/06/2005	B	ADDED PCB AND BEZEL LAYOUT	N/A

<b>ENTER DESCRIPTION</b> IEC NO: USY2006-0073 DRANKS IMONSON 2006/01/17 CHYKORUSSELL 2006/01/20 APPR:BRUSSELL 2006/01/25	QUALITY SYMBOLS  =0  =0	GENERAL TOLERANCES (UNLESS SPECIFIED)		DIMENSION STYLE <b>IN/MM</b>	SCALE <b>1:1</b>	DESIGN UNITS <b>METRIC</b>	 THIRD ANGLE PROJECTION
		4 PLACES ± --- ± --- 3 PLACES ± --- ± .005 2 PLACES ± 0.13 ± .010 1 PLACE ± 0.25 ± --- ANGULAR ± 1 °	DRAWN BY DATE KSI MONSO 2003/09/25 CHECKED BY DATE BRUSSELL 2003/10/27 APPROVED BY DATE BRUSSELL 2003/10/27	TITLE <b>1X2 SFP GANGED CAGE ASSEMBLY, PRESS FIT</b>		MATERIAL NO. DOCUMENT NO. <b>747220001 SD-74722-001</b>	
DRAFT WHERE APPLICABLE MUST REMAIN WITHIN DIMENSIONS		THIS DRAWING CONTAINS INFORMATION THAT IS PROPRIETARY TO MOLEX INCORPORATED AND SHOULD NOT BE USED WITHOUT WRITTEN PERMISSION					

19 18 17 16 15 14 13 12 11 10 9 8 7 6 5 4 3 2 1