

1

2

3

4

5

6

7

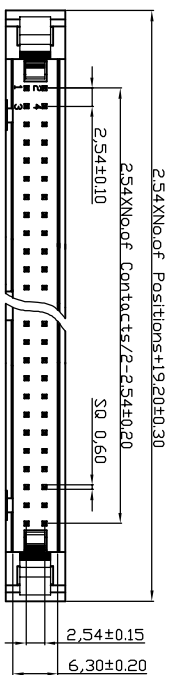
A

Ordering Information

AWH XXG-02X2-IDC

No. of Contacts:
 10, 14, 18, 20, 26
 30, 34, 40, 50, 60, 64

Latch Type
 0 - without latch
 2 - with short latches
 3 - with long latches



- NOTES:**
- MATERIAL**
 1. Insulator Material: PBT+30%G.F. (UL94V-0); Grey
 2. Contact Material: Brass
 3. Contact Plating : 1u" Au selective Over Ni ELECTRICAL
- ELECTRICAL**
 1. Current Rating : 3.0 AMP
 2. Withstand Voltage : 1000V AC/minute
 3. Contact Resistance : 20mΩ max
 4. Insulation Resistance : 1000MΩ min
- ENVIRONMENTAL**
 1. Operation Temperature: -40°C to +105°C
 2. Packing : Tube
 3. 10P~18P with slot "M" without slot "N"
 20P~64P with slot "W" and "N"

A

B

B

C

C

D

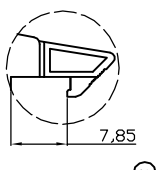
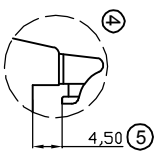
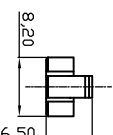
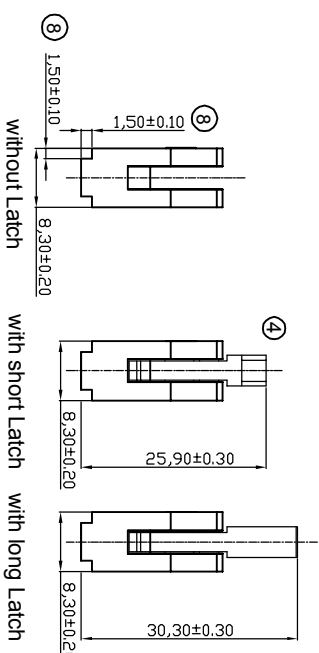
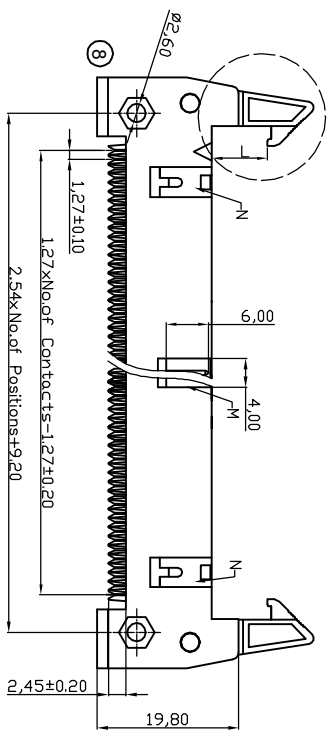
D

E

E

F

F



RoHS compliant
 Unit: mm



Scale	Free	③	Modify the shape of insulator	05.06.2017	Winnie			
TOLERANCE		⑦	Change the packing tray into tube	21.09.2015	Winnie	Drawn	25.01.2006	Alex
X.X	±0.40	⑥	Add UL file no.	12.12.2013	Winnie	Approved	05.06.2017	Winnie
X.XX	±0.25	⑤	Update	29.03.2013	Amy			
X.XXX	±0.15	④	Correct drawing of short latch	05.05.2010	Dean			
ANGLE	±3°	③	Modify dimension from 7.65 to 7.85	03.11.2009	Dean			
DIM	TOL		Modification	Date	Name	 		

Customer-No.

ASSMANN WSW-No.

AWH XXG-02X2-IDC

Drawing-No.

ASS 2231 CO

rev08

Replace

Sheet

1

2

3

4

5

6

7

H

G