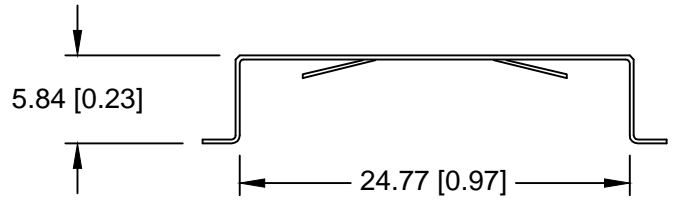
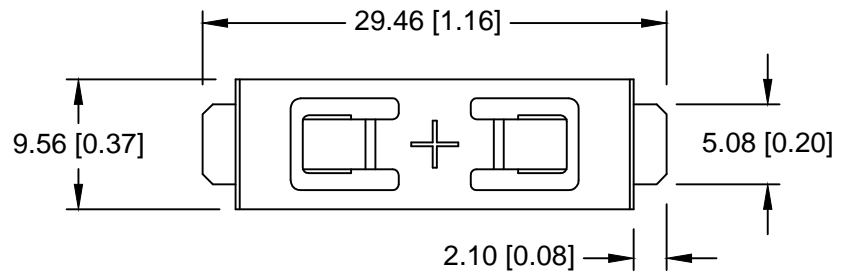
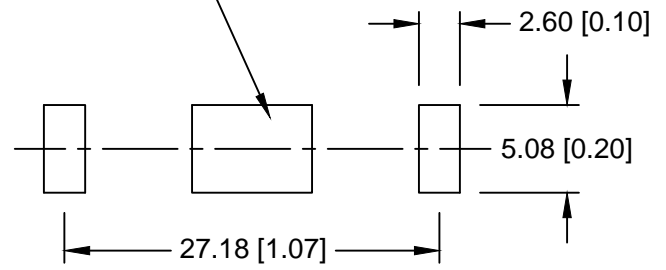


Date	SYM	REVISION RECORD	AUTH	DR.	CK.
09/02/16	B	UPDATED SHAPE OF POSITIVE CONTACT TAB	T.B.	B.S.	
12/09/16	C	ADDED TABLE OF BATTERIES	T.B.	B.S.	
05/19/17	D	Dim. 9.56 WAS 8.26	T.B.	B.S.	
08/25/17	E	Dim. 5.84 was 5.59	T.B.	B.S.	




NEGATIVE CONTACT PAD
NICKEL OR GOLD PLATED
RECOMMENDED



PCB LAYOUT

- NOTES:
1. MATERIAL:
0.25mm PHOSPHOR BRONZE, NICKEL PLTD.
 2. ROHS 2 COMPLIANT

CELL SIZE	RETAINS BATTERY NUMBERS
24mm	BR2450, CR2450, DL2450, LIR2450

Tolerance (Except as noted)	 Memory Protection Devices, Inc 200 Broad Hollow Road, Farmingdale, New York 11735		
		decimal ±.5 (.020)	Scale
Fractional ± .8 (.030)	Title CR2450 BATTERY STRAP, SMT	Approved By T.B.	
Angular ± 3°	Date 08/25/17	Drawing Number BC-2005	