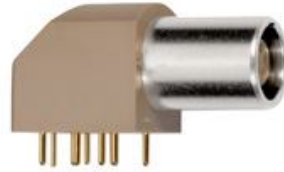


SUMMARY



Wires

| | |
|------------------|--------------------|
| Low | 6 |
| High | 0 |
| Coax | 0 |
| Triax | 0 |
| Quad | 0 |
| Fiber | 0 |
| Fluidic | 0 |
| Series | 1B |
| Termination type | Female print PCB |
| IP rating | 50 |
| Cable Ø | 0.00 - 0.00 mm |
| Matching parts | FGG.1B.306.CLAD52Z |

Download

- [Request a quote](#)
- [PCB Eagle Pattern](#)
- [PCB Altium Pattern](#)
- [Catalog](#)

TECHNICAL DETAILS

Mechanics

| | |
|-------------------|--|
| Shell Style/Model | EP*: Elbow receptacle for printed circuit (solder or screw fixing) |
| Keying | 1 key (alpha=0, plug: male contacts, receptacle: female contacts) |
| Housing Material | PPS (Polyphenylene) shell, other pieces nickel plated brass |
| Cable Fixing | ∅ 0 - 0 mm |
| Variant | |

Performance

| | |
|---------------|--|
| Configuration | 1B.306/EPG : 6 Low Voltage |
| Insulator | L: PEEK (UL 94 / V-0/3.2, depends on material thickness) |
| Rated Current | 6 Amps |

Specifications

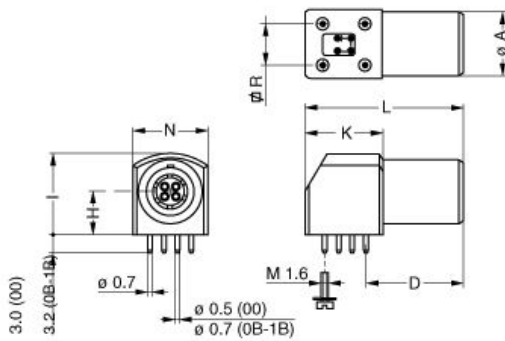
| | |
|--------------------------|--------------------------|
| Contact Type: | Print (straight) |
| Max. Matings: | 5000 |
| Contact Dia.: | 0.7 mm (0.028in) |
| R (max): | 6.1 mOhm |
| Vtest (contact-shell): | 1200 V (AC), 1700 V (DC) |
| Vtest (contact-contact): | 1050 V (AC), 1490 V (DC) |

Others

Temp (min / max): -55° C / +250° C
 Humidity (max): <=95% [at 60 deg C /140 F]
 Vibration: 15 g [10 Hz - 2000 Hz]
 Shock Resistance: 100 g [6 ms]
 Salt Spray Corrosion: >1000 hr
 Climatical Category: 50/175/21
 Shielding (min): 75 dB (10 MHz)
 Shielding (min): 40 dB (1 GHz)
 IP Rating: 50

DRAWINGS

Draws



Dimensions

| | A | D | H | I | K | L | N | R |
|-----|------|------|------|------|------|------|------|------|
| mm. | 11 | 16.6 | 7.5 | 14 | 13.3 | 27 | 12.6 | 7.62 |
| in. | 0,43 | 0,65 | 0,30 | 0,55 | 0,52 | 1,06 | 0,50 | 0,30 |

RECOMMENDED BY LEMO

Tools

None

Cables