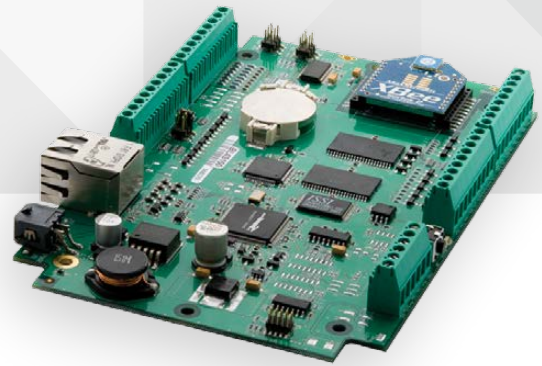




SINGLE-BOARD
COMPUTER



RABBIT SBC BL4S100 SERIES

Integrated hardware and software platform to easily implement a ZigBee enabled Ethernet gateway ideal for monitoring and control

Digi's BL4S100 series single-board computers offer a cost-competitive solution for control and communication that dramatically reduces your time to market.

The series is designed to support the rapidly-increasing use of ZigBee connectivity for companies looking to deploy wireless networking. Digi International's ZigBee RF modules are compatible with ZigBee PRO compliant devices from other manufacturers, providing great flexibility in choices of nodes to include in the network. Build feature-rich web pages that allow control and monitoring of ZigBee enabled networks by using ZigBee AT and API command libraries. With two available

RS-232 ports, eight analog inputs and 20 Digital I/O lines, the BL4S100 is well suited to handle a wide range of applications requiring ZigBee connectivity.

Digi also offers a plastic enclosure and mesh networking add-on kit to support further design requirements.

BENEFITS

- Rabbit 4000 running at 40 MHz
- On-board Rabbit RIO® device for exceptional I/O functionality and flexibility
- Web server functionality
- Easy implementation of mesh networking with known good hardware
- Dynamic C® software environment to reduce development time

RELATED PRODUCTS



Rabbit®
SBC BL2100
Series



Rabbit® SBC
BL2600
Series



Rabbit® SBC
BL4S200
Series

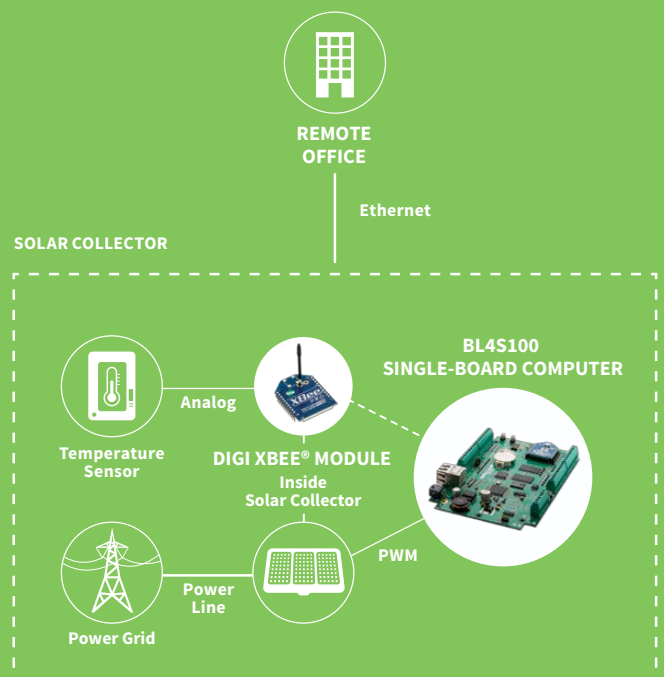


Rabbit RIO
Programmable I/O
Application Kit



Dynamic C®

APPLICATION EXAMPLE

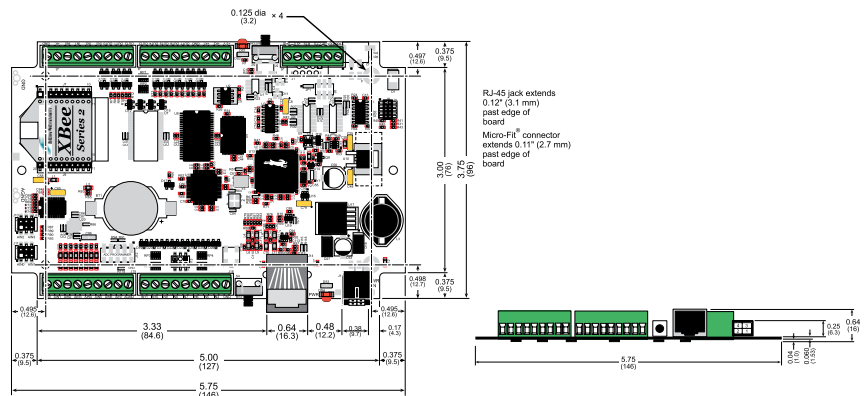


SPECIFICATIONS		BL4S110	BL4S160
FEATURE			
MICROPROCESSOR	Rabbit® 4000 at 40 MHz		
ETHERNET INTERFACE	10Base-T		
SERIAL FLASH MEMORY (PROGRAM)	1 MB		2 MB
PROGRAM EXECUTION SRAM	512 KB		1 MB
DATA SRAM	512 KB		
BACKUP BATTERY	Panasonic CR2032 or equivalent 3V lithium coin type, 235 mA-h standard, socket-mounted		
DIGITAL INPUTS	12: protected to ±36 VDC, switching threshold 1.4 V/1.9V typical		
DIGITAL OUTPUTS	8: sink up to 200 mA each, 36 VDC max		
ANALOG INPUTS	Eight 11-bit res. channels, software-selectable ranges unipolar: 1, 2, 2.5, 5, 10, 20VDC 4 channels can be hardware-configured for 4–20 mA; 1 MΩ input impedance, up to 4,100 samples/s		
SERIAL PORTS	3 serial ports: • 2 RS-232 or 1 RS-232 (with CTS/RTS) • 1 serial port dedicated for programming/debug		
SERIAL RATE	Max. asynchronous rate = CLK/8, Max. synchronous rate = CLK/2		
HARDWARE CONNECTORS	Micro-Fit® connector: 1 polarized 2 × 2 with 3 mm pitch (power); Screw-terminal connectors (accept up to 14 AWG/1.5 mm2 wire): four 1 × 9 (I/O), one 1 × 6 (serial); Programming port: 2 × 5 IDC, 1.27 mm pitch		
ETHERNET NETWORK CONNECTOR	1 RJ-45 Ethernet		
REAL-TIME CLOCK	Yes		
TIMERS	Ten 8-bit timers (6 cascable, 3 reserved for internal peripherals), one 10-bit timer with 2 match registers		
WATCHDOG/SUPERVISOR	Yes		
POWER	9–36 VDC, 2 W max.		
OPERATING TEMPERATURE	–40° C to +85° C		
HUMIDITY	5–95%, non-condensing		
BOARD SIZE	3.75" × 5.75" × 0.64" (96 mm × 146 mm × 16 mm)		



Plastic enclosure: Part number 101-1279

The plastic enclosure, consisting of a base and a cover, provides a secure way to protect your BL4S100 series single-board computer.



PART NUMBERS	DESCRIPTION
20-101-1256	BL4S110 512K
20-101-1258	BL4S160 1M

DIGI SERVICE AND SUPPORT / You can purchase with confidence knowing that Digi is always available to serve you with expert technical support and our industry leading warranty. For detailed information visit www.digi.com/support.

© 1996-2017 Digi International Inc. All rights reserved.
All trademarks are the property of their respective owners.

91001509
C4/717

DIGI INTERNATIONAL WORLDWIDE HQ
877-912-3444 / 952-912-3444 / www.digi.com

DIGI INTERNATIONAL GERMANY
+49-89-540-428-0

DIGI INTERNATIONAL JAPAN
+81-3-5428-0261 / www.digi-intl.co.jp

DIGI INTERNATIONAL SINGAPORE
+65-6213-5380

DIGI INTERNATIONAL CHINA
+86-21-50492199 / www.digi.com.cn

