

Shock-Safe Fuseholder, 5 x 20 mm, Slotted Cap, 4 W / 16 A, IP 40 / IP 67



250 VAC · 4 W/16 A (VDE) · 600 VAC/DC · 30 A (UL/CSA)



Description

- Screw type fuse carrier

Unique Selling Proposition

- Fuseholder with high rated power acceptance
- Panel thickness up to 10mm

Standards

- IEC 60127-6
- UL 4248-1
- CSA C22.2 no. 4248.1


Approvals

- VDE Certificate Number: 127212
- UL File Number: E39328

Weblinks

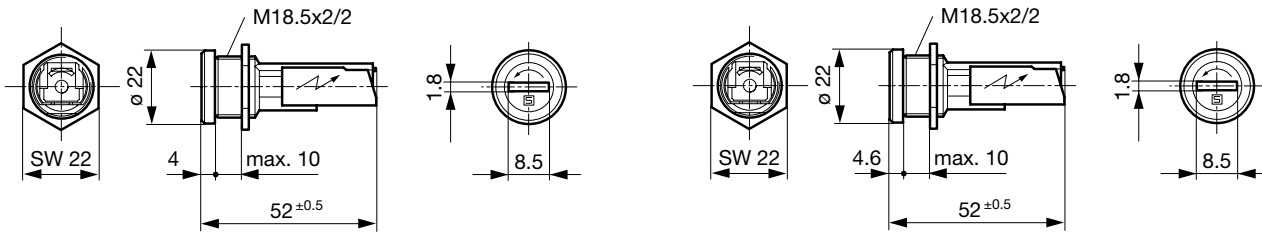
[pdf datasheet](#), [html-datasheet](#), [General Product Information](#), [Packaging details](#), [Approvals](#), [CE declaration of conformity](#), [RoHS](#), [CHINA-RoHS](#), [REACH](#), [Distributor-Stock-Check](#), [Accessories](#), [Detailed request for product](#)

Technical Data

| | | | |
|------------------------------|-------------------------------------------------------------------------------------------------------------------------------------|---------------------------------|-----------------------------------------------------------------|
| Shock-Safe Category | PC2 | Soldering Methods | Iron Soldering Profile |
| Fuse-Link | 5 x 20 mm | Solderability | 350 °C / 2 sec acc. to IEC 60068-2-20, Test Ta, method 2 |
| Mounting | Panel Mount, Front Side | Resistance to Soldering Heat | 350 °C / 10 sec acc. to IEC 60068-2-20, Test Tb, method 2 |
| Attachment | Fixing Nut | Contact Resistance | < 3.5 mΩ at 20 mV |
| Terminal | Solder or Quick-Connect 6.3 x 0.8 mm | Dielectric Strength | > 3kV > 4kV between L/N-PE (50Hz; 1 min) |
| Rated Voltage | 250VAC (VDE), 600VAC/DC (UL/CSA) | Impulse Withstand Voltage | > 4kV between L-N > 6kV between L/N-PE |
| Rated current | 16 A (VDE), 30 A (UL/CSA) | Insulation Resistance | > 10 MΩ between L-N > 100 MΩ between L/N-PE (500 VDC; 1 min) |
| Rated Power Acceptance IEC | 4 W / 16 A @ Ta 23 °C Admissible power acceptance at higher ambient temperature see derating curves | Overvoltage Category | I - II acc. to IEC 60664-1 |
| Degree of Protection | IP 40 / IP 67 | Pollution Degree | 1 - 2 acc. to IEC 60664-1 |
| Protection Class | Suitable for appliances with protection class I or II acc. to IEC 61140 | Admissible Torque on Fixing Nut | max 1.2 Nm |
| Admissible Ambient Air Temp. | -40 °C to 85 °C | Panel Thickness | max 10 mm |
| Climatic Category | 40/085/21 acc. to IEC 60068-1 | | |
| Material: Socket | Thermoset, black, UL 94V-0 | | |
| Material: Terminals | Tin-Plated Copper | | |
| Unit Weight | 30 g | | |
| Storage Conditions | 0 °C to 60 °C, max. 70% r.h. | | |
| Product Marking |  , Type, Rated Voltage, Rated current, Approvals | | |

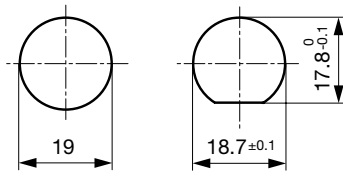
Detailed information on product approvals, code requirements, usage instructions and detailed test conditions can be looked up in [General Product Information](#)

Dimension



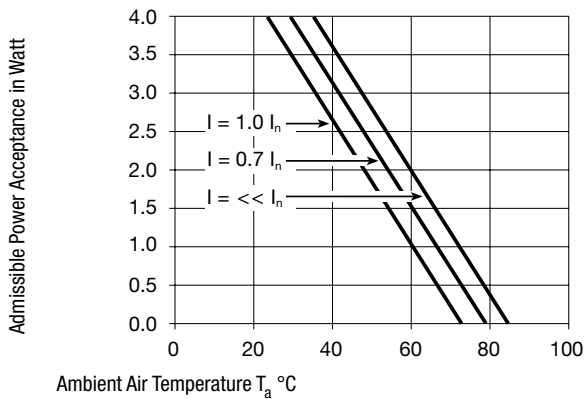
Variants 0031.2203, 0031.2207

Variants 0031.2201 und 0031.2205



Mounting holes

Derating Curves



All Variants

| Holder | Cap | Terminal | Degree of Protection | Order Number |
|--------|---------|----------------------------|----------------------|--------------|
| ● | slotted | Solder | IP 67 | 0031.2201 |
| ● | slotted | Quick-Connect 6.3 x 0.8 mm | IP 67 | 0031.2205 |
| ● | slotted | Solder | IP 40 | 0031.2203 |
| ● | slotted | Quick-Connect 6.3 x 0.8 mm | IP 40 | 0031.2207 |

Most Popular.

Availability for all products can be searched real-time: <http://www.schurter.com/en/Stock-Check/Stock-Check-SCHURTER>

Packaging Unit Bulk (25 pcs.)

Accessories

Description



Cover FIZ, FUL
Insulation Cover for FIZ, FUL